

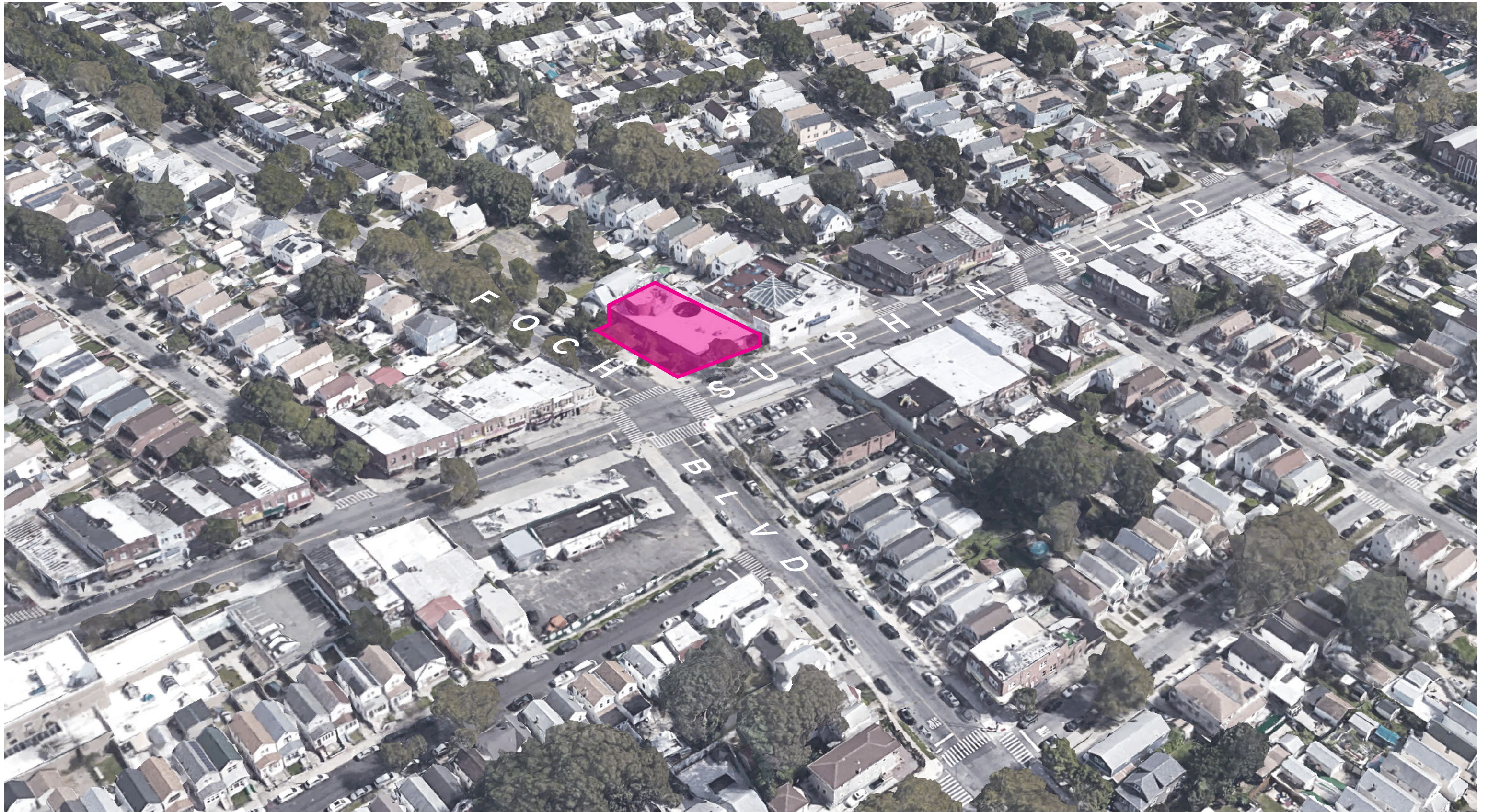
BAISLEY PARK COMMUNITY LIBRARY

Queens Community Board 12Q

March 3, 2026

LEVENBETTS















Green Roof

Capture Existing Courtyard as Interior Space but Maintain the Zone as a Source of Illumination to the Deep Interior Spaces

Solar Panels on Roof

Replace Glass Entry to Improve Daylighting and Connection to the Neighborhood

Create Public Plaza to Highlight and Enhance Sutphin/Foch Intersection as an Urban Node

Penthouse Brick Pattern similar to Equipment Storage Shed

Equipment Storage Shed with Perforated Brick Pattern

Improve Accessibility to the Rear Service Entry

Improve Connectivity Between New Outdoor Reading Area and Library with New Windows

Create Connections to the Landscape to Promote Wellness. Activate Public Plaza and Side Garden with New Entry

Reading Courtyard with Public Bench and Movable Furniture

Windows in Vestibule Create Lines of Site for Main Entrance

Public Bench at Library Threshold

Activated Public Space at Corner of Sutphin and Foch with New Entry

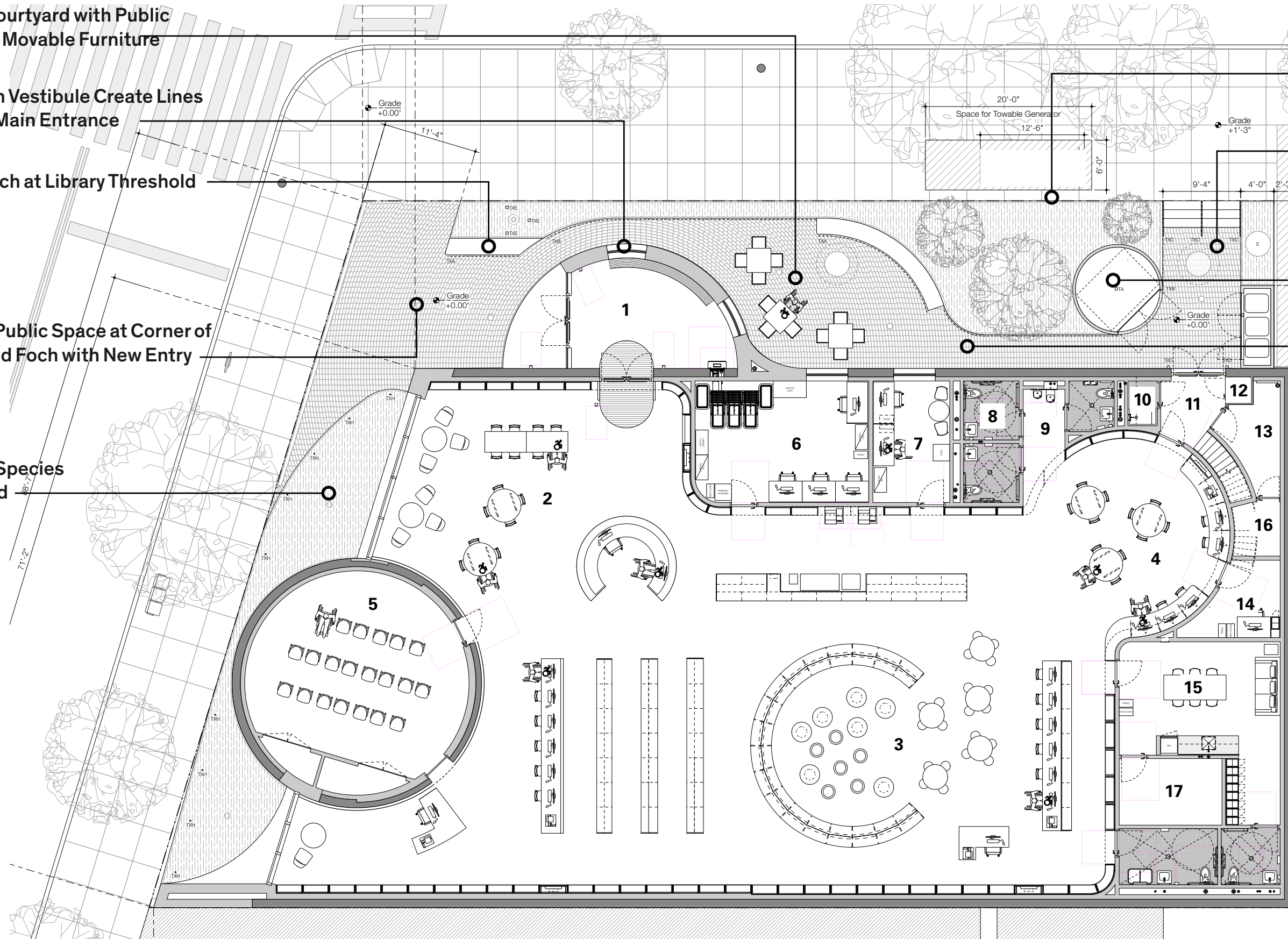
Pollinator Species Planter Bed

Remove Fenced Boundary
Pollinator Species Planter Beds

Sunken Courtyard with Trash Staging

Equipment Storage Shed

Accessible Right-of-Way Creates Continuity Across Corner Lot



Key:

- 1 Entry Vestibule
- 2 Adult Area
- 3 Children's Area
- 4 Teen Area
- 5 Multi-Purpose Room
- 6 Staff Room
- 7 Librarian's Office
- 8 New Restrooms
- 9 Hall
- 10 Janitor's Closet
- 11 Exit Hallway
- 12 Gas Meter Room
- 13 Electrical Room
- 14 Janitor's Office
- 15 Staff Lounge
- 16 Storage
- 17 AV/IT



Existing Fencing Creates Visual and Physical Barrier

Existing Glazing is Screened and Closed Off



Existing Sutphin Boulevard Facade

Move Entry to Corner to Create Public Plaza and More Opportunities for Public Seating

Remove Fencing and Visual Barriers

Increase Glazing and Visibility for a more Welcoming Street Presence and Connection to Interior



Proposed Sutphin Boulevard Facade

Existing Fencing Blocks Community from Library and Sideyard

No Glazing or Connection between Library Interior and Street



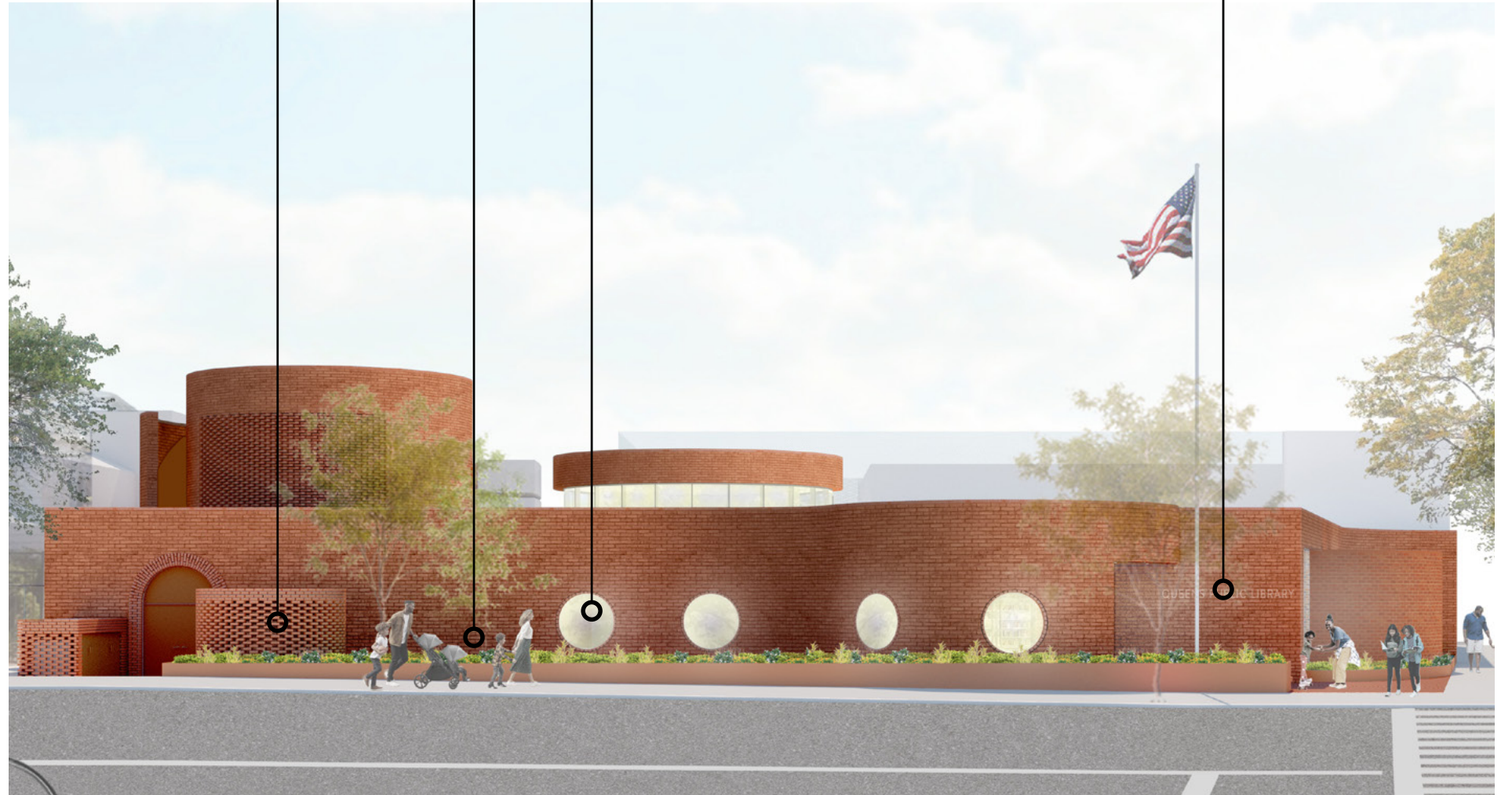
Existing Foch Boulevard Facade and Side Yard

Equipment Storage Shed

Reading Courtyard around Pollinator Bed Creates Welcoming Atmosphere

Added Windows along Foch Facade Creates Connection between Library and Public

New Welcoming Vestibule and Entrance at Foch Boulevard



Proposed Foch Boulevard Facade and Side Yard





Existing Orange/Red
"Common Brick" on Foch
Facade

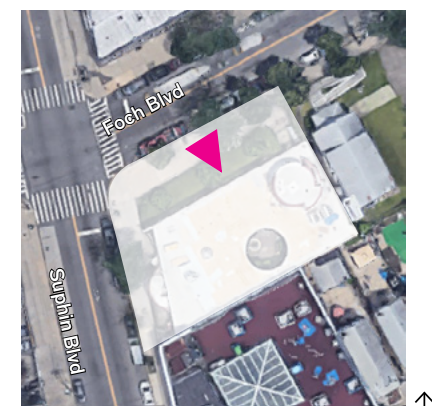
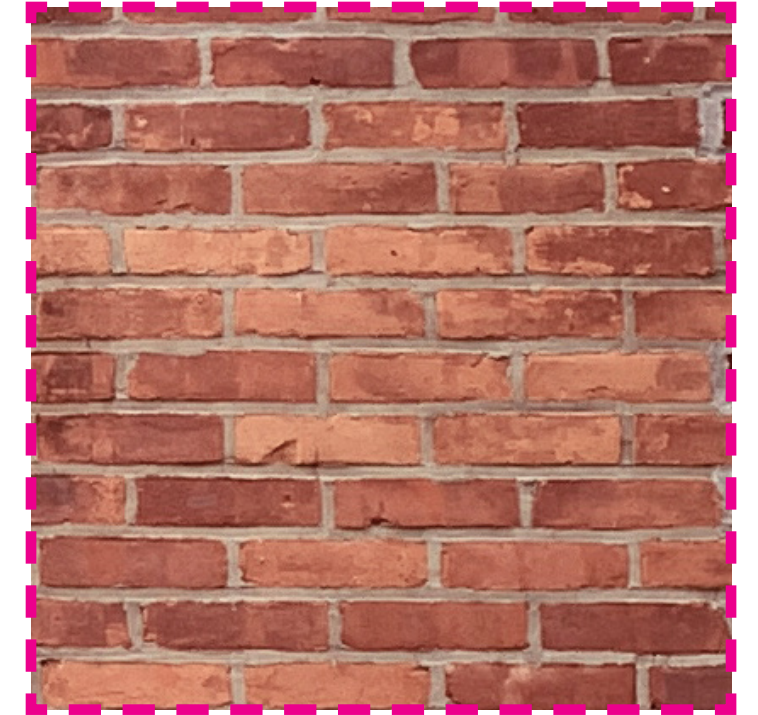
Existing Stone Coping
to Be Replaced by
Brick or Terra Cotta

Existing Two Courses
of Darker Red Brick at
Coping

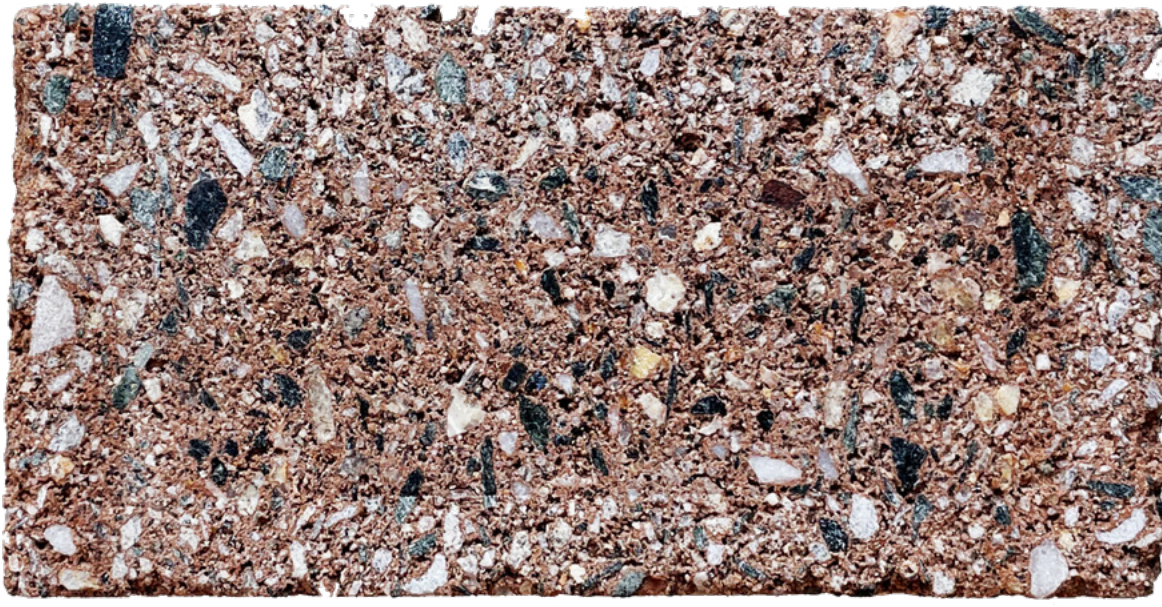
Variegated Brick due to
Weather and Wear

Existing Mismatched
Patch Brick

New Brick Cladding to
Match Existing Brick
Color Range



Landscape Materials + Products



1

2

3

Building Materials + Products



4

5

Landscape Materials + Products

- 1 Metal Planter Walls
Tournesol Siteworks "Kitsap"
Corten Steel
- 2 Seating
QCP
Precast Concrete Custom Seats
Custom Aggregate
- 3 Pavers
Belden
Match Existing Brick Color

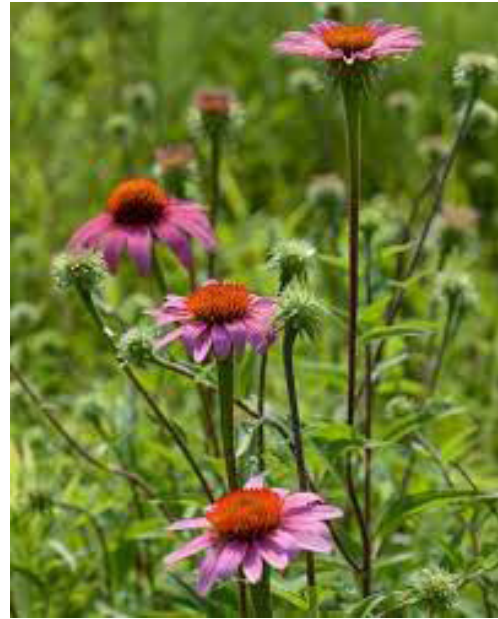
Building Materials + Products

- 4 Window + Door Frames, Railing
Stainless Steel
- 5 "Common Brick"
New Brick to Match Existing

New Plants



CEANOTHUS AMERICANUS
JERSEY TEA SHRUB



ECHINACEA PURPUREA
PURPLE CONEFLOW



EUPATORIUM FISTULOSUM
JOE PYE WEED



LOBELIA SPICATA
BLUE CARDINALFLOWER



SESLERIA AUTUMNALIS
AUTUMN MOOR GRASS



SCHIZACHYRIUM SCOPARIUM
"STANDING OVATION"



BOUTELOUA GRACILIS "BLONDE
AMBITION"



HELENIUM
SNEEZEWEED

New Trees



AMELANCHIER
"AUTUMN BRILLIANCE"

Existing Courtyard Provides Light into Deep Interior Spaces



Existing Circular Courtyard

Existing Courtyard to be Captured as Interior Space for Children's Reading and Programming

New Interior Children's Area to Maintain Circle Theme and Maintain Lighting for Deep Interior Spaces



Proposed Interior Children's Area



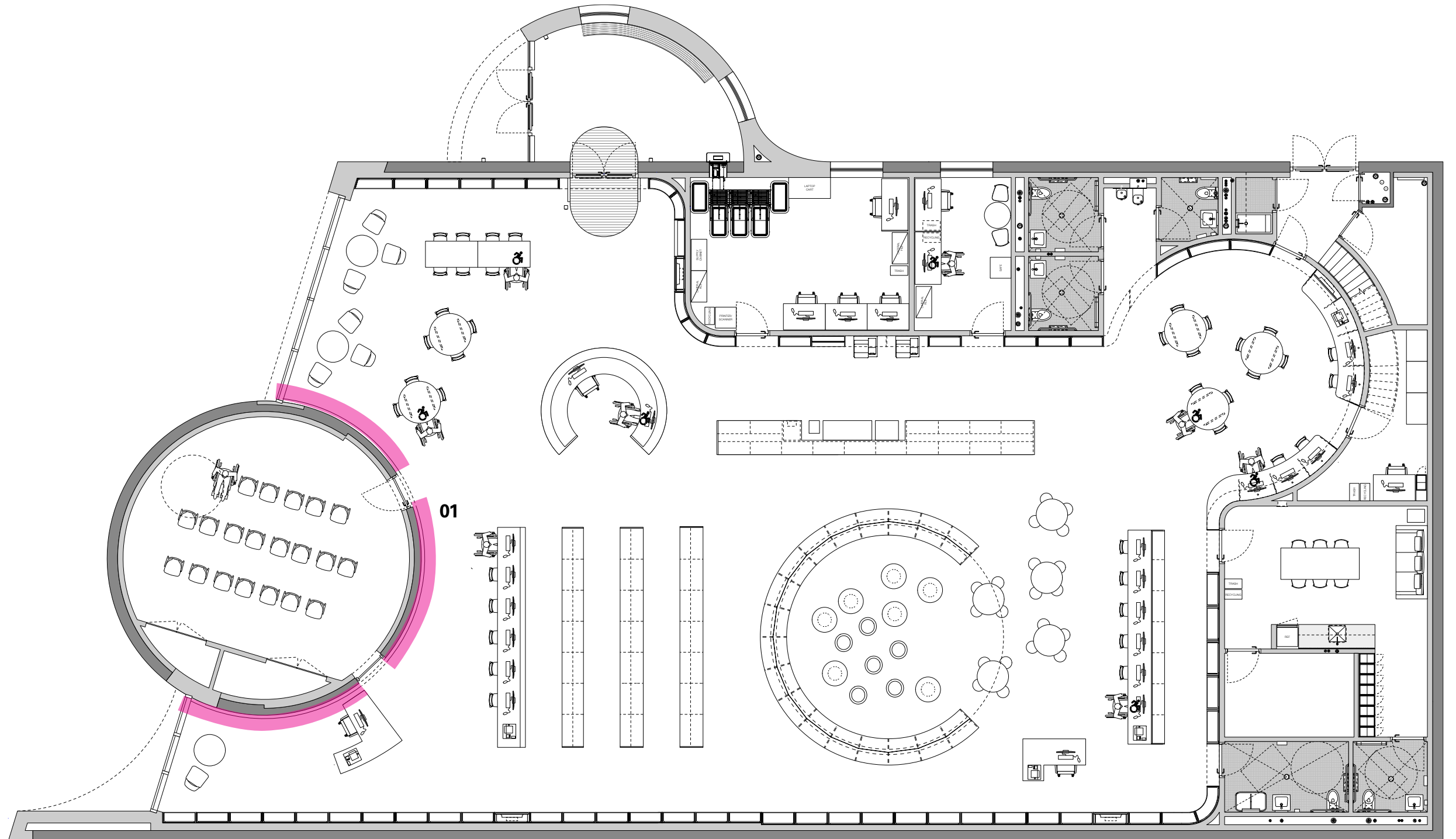
**AREA FOR ARTWORK
INTERIOR**

01 Multi-Purpose Room

% FOR ART ARTIST:

Serge Attukwei Clottey

MATERIAL PALETTE PRESENTED:





September 29, 2025

Baisley Park Community Library Groundbreaking

Schedule

Construction Start

Fall 2025

Anticipated Construction Completion

End of 2027

Contact Information

Anna Killion

Outreach Coordinator of Office of Community Outreach & Notification (OCON),

C: 347-374-0930

killionan@ddc.nyc.gov

Norberto Acevedo

Director Office of Community Outreach & Notification (OCON),

DDC Mobile - 347249371

acevedono@ddc.nyc.go